

5% Admin Fee Will Be Charged on All On-Site Purchases • 10% Total Internet Bidding Fee Will Be Charged on All Internet Purchases
Auctioneers: Jim Richie - TX Lic# 13742 • Dan Kruse - TX Lic# 7674

Live Online
Bidding

Powered By:
proxibid

NAA
Auctioneer

IADC

EWTG



CASE 580's - DY3 YD3



KERR T-60 600HP / CAT C18 - DY3 YD4

Low Hours



NEW Casing Scrapers - DY2 YD2

NEW!



2008 FALCON SR-550 - DY3 YD3

3 DAY AUCTION

DECEMBER 7th/8th/9th, 2021 OKLAHOMA CITY, OK

9:00AM (CST) Each Day @ The Embassy Suites - Airport

- 1 DAY** HUNDREDS OF SERVICE & PRODUCTION PACKERS, RBP'S, CASING SCRAPERS, TAC'S, CEMENTING TOOLS, TUBING SWIVELS, PRODUCTION EQUIP
- 2 DAY** THOUSANDS OF NEW FISHING TOOLS, JARS, BUMPER SUBS, INTENSIFIER'S
- 3 DAY** CONSTRUCTION, TRUCKS, TRAILERS, BUCKET & DIGGER TRUCKS, (8) WELL SERVICE RIGS, TRIPLEX PUMPS & SWIVELS, CREW & SERVICE TRUCKS, UTILITY TRAILERS, FRAC TANKS, DRILLING RIG & COMPONENTS, DRILL PIPE



Komatsu PC-160 LC DY3 YD3



AS1X Packers - DY1 YD1



32A & HD Service Packers DY1 YD1

Some New



2018 PETE 389 70-B6I - DY3 YD3



Series 70 OS Grapples - DY2 YD2

NEW!



J. DEERE 700K XLT - DY3 YD3



TS Bridge Plugs - DY1 YD1



SMITH Versa-Lock - DY1 YD1



Tension Packers - DY1 YD1



9123 Grapples - DY2 YD2

Some New

NEW

DAY 1

YARD #1 - DRUMRIGHT, OK

ADDRESS: Young Tool @ 262 E Federal, 74030

PREVIEW: December 1st, M-F (8-5)

CONTACT: Tim Young @ (918) 352-1177

SERVICE PACKERS

32A Service Packers: (3) 7" - 5/8" • (10) 5-1/2" • (4) 4-1/2"

SC Unloader Valves: (2) 2-7/8" & (5) 2-3/8"

D & L 2-3/8" Compression Unloader Valve **(NEW)**

HD Service Packers: (2) 7-5/8" • (3) 7" • (4) 5-1/2" • (5) 4-1/2"

CS-1 Service Packers: (1) 9-5/8" • (6) 7" • (3) 5-1/2" • (3) 5" • (6) 4-1/2" & Ass't'd Parts

(4) **BJ** Top of Texas 5-1/2" x 2-3/8" Service Packers

TST Service Packers: (3) 7-5/8" • (1) 7" • (4) 5-1/2" • (1) 5" & (4) 4-1/2"

Oil Base Swellable Packers: (8) 5-1/2" & (9) 4-1/2"

SERVICE TOOLS

Hyd Setting Tools: **BAKER** 20 • **BAKER** 10 • **AMERICAN COMPLETION** #10 • **SMITH** 2-3/8" & 'J'

2-7/8" Splined Expansion Joint w/ 48" Stroke • **BAKER** 2-3/8" Splined Expansion Joint • **D & L** Retrieving Tool f/RSBP **(NEW)**

RETRIEVABLE BRIDGE PLUGS

ARROW 7" Type C RBP w/ Retrieving Tool

(2) **TS** 7-5/8" Wireline Set RBP's w/ Retrieving Tool & Setting Sleeves **(NEW)**

TS RBP's: (3) 7" • (2) 5-1/2" • (1) 5" & (1) 4-1/2" w/ 5-1/2" & 4-1/2" **TS** Retrieving Tools

(3) **SITE** 5-1/2" & (3) 4-1/2" Wireline Retrievable Bridge Plugs, w/ Setting Sleeve & Retrieving Tool

SITE 4-1/2" Wireline Retrievable Bridge Plug w/ Setting Sleeve & Retrieving Tool

7" Type B Cup Plug RBP w/ Retrieving Tool

4-1/2" Type A Cup Plug RBP w/ Retrieving Tool

7" x 2-7/8" **WLTC** Retrieving Tool

PRODUCTION PACKERS

AS1X Production Packers: (1) 8-5/8" • (3) 7-5/8" x 2-7/8" • (1) 7" x 3-1/2" • (7) 7" x 2-7/8" • (16) 5-1/2" x 2-3/8" • (20) 5-1/2" x 2-7/8" • (2) 5" • (8) 4-1/2" • (6) 4" • (2) 2-7/8" & Ass't'd Setting Sleeves

AS1XS Production Packers: 5-1/2" x 2-7/8" • (2) 4-1/2" x 2-3/8"

AS1X Wireline Set Production Packers: (2) 5-1/2" x 2-7/8" • (2) 5-1/2" x 2-3/8" **(NEW)**

SMITH VERSA-LOCK Production Packers: (1) 7-5/8" • (5) 7" • (14) 5-1/2" x 2-7/8" • (10) 5-1/2" x 2-3/8" • (16) 4-1/2" x 2-3/8"

AS III Production Packers: 7" x 3-1/2" • (4) 7" x 2-7/8" • (1) 5-1/2" x 2-3/8" • (1) 4-1/2"

AS II Production Packers: (2) 7" • (4) 5-1/2" • (6) 4-1/2"

AS 1 Production Packers: (5) 5-1/2" **ARROW** XLW Seal Bore Wireline Set Packers: 4-1/2" & 5-1/2"

REPTA II 4-1/2" Seal Bore Wireline Set Packer

P1-75 Production Packers: (2) 7" x 2-7/8" • (2) 5-1/2" x 2-7/8"

PATRIOT Production Packers: (12) 5-1/2" x 2-3/8"

Model 'R' Double Grip Packers: (5) 7-5/8" • (12) 7" • (1) 6-5/8" • (6) 5-1/2" x 2-7/8" • (5) 5-1/2" x 2-3/8" • (4) 5" • (12) 4-1/2"

Model 'R' Single Grip Packers: (2) 7" • (2) 5-1/2" x 2-7/8" • (28) 5-1/2" x 2-3/8" • (7) 4-1/2"

D & L 7" Snap Set 1 Production Packer

ARROW Type 'S' 7" X 2-3/8"

BAKER AD-1 Production Packers: 8-5/8" x 2-3/8" • 5-1/2" x 2-3/8" • 4-1/2" x 2-3/8"

BAKER 'A' Production Packers: 7" • 5-1/2" x 2-3/8" • 4-1/2" x 2-3/8"

BAKER Model G Production Packers: (2) 7" • (3) 5-1/2" • (3) 4-1/2"

BAKER AR-1 4-1/2" x 2-3/8" Production Packer

BAKER Lock-Set Production Packers: (5) 7" • (2) 5-1/2" x 2-7/8" • (18) 5-1/2" x 2-3/8" • (4) 4-1/2" x 2-3/8"

SMITH Hydraulic Production Packers: 7-5/8" • 7" • (3) 5-1/2" **(NEW)**

OTIS Perma Latch Production Packers: (2) 7" • (12) 5-1/2" • (4) 4-1/2"

OTIS MH 4-1/2" Single Grip Production Packer

OTIS MH 5-1/2" Double Grip Production Packer

HALLIBURTON R-3 7" Production Packer

ARROW Tension Packers: 4-1/2" & (4) 5-1/2" x 2-3/8" Type SL • 4-1/2" & (2) 5-1/2" x 2-3/8" Type SL Shear • 4-1/2" Type S Shear • (3) 4-1/2" • (5) 5-1/2" & (1) 7" Type S • 4-1/2" • 5" x 2-7/8" & (5) 5-1/2" x 2-7/8" Type H • 4-1/2" x 2-3/8" Cherokee

D & L DL-1 Tandem Tension Packers: 4-1/2" x 2-3/8" • 5-1/2" x 2-3/8"

SHAW 4-1/2" x 2-3/8" Tension Packer

COWBOY Shear Tension Packers: (3) 5-1/2" x 2-3/8" **(NEW)** • 4-1/2" x 2-7/8"

TEAM 7" x 2-7/8" Shear Tension Packer

MAP 5-1/2" x 2-3/8" Shear Tension Packer

GUIBERSON Tandem Tension Packers: (3) 7" • (2) 5-1/2" • (6) 4-1/2"

(2) **GUIBERSON** UNI-1 Shear Tension Packers: 8-5/8" x 4-1/2" **(NEW)** • 7" x 2-7/8"

Cup Packers: (4) 7" Dbl • (7) 4" Dbl & (1) 7" Sgl

ARROW Casing Packers: 4" x 5-1/2" • (2) 4-1/2" x 7"

(9) Ass't'd 2-7/8" Tension Packers Liner Packers: (2) 5-1/2" • (6) 4-1/2" 4-1/2" x 2-3/8" Drill Pipe Tension Packer

TUBING ANCHOR CATCHERS

(5) **ARROW** Type R 4-1/2" x 2-3/8" • (1) **ARROW** Type HD 4-1/2" x 2-3/8" • **D & L** 'AS' 4-1/2" x 2-3/8" • (2) 5-1/2" x 2-7/8" Quarter Turn TAC

CEMENTING TOOLS

(2) **WEATHERFORD** 5-1/2" Stage Tools w/ Ultra DQX 4.654" ID **(NEW)**

(2) **WEATHERFORD** 7" Stage Tools, 26# w/ Buttress **(NEW)**



Model "R" Dbl Grip - DY1 YD1



Model "R" Sgl Grip - DY1 YD1



Magnets - DY2 YD2



Boot Baskets - DY2 YD2

NEW

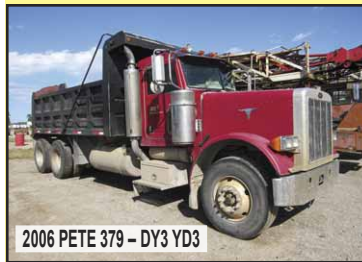


NEW

Taper & Box Taps - DY2 YD2



HITACHI EX17U - DY3 YD3



2006 PETE 379 - DY3 YD3



2010 SKYTRAK 6036 - DY3 YD3

(3) **INDUSTRIAL RUBBER** 4-1/2" 2-Stage Cementing Tools (**NEW**)
Cement Retainer Mechanical Setting Tools: 8-5/8" • (2) 7" • (1) 5-1/2" • (1) 4-1/2"

Wireline Cement Retainer Stingers: 8-5/8" • (2) 7" • (1) 5-1/2" • (6) 4-1/2"

Hundreds of Cement Retainer Wireline & Mechanical Slips: 13-3/8" to 4-1/2" (**NEW**)

5" Mechanical Set Cast Iron Plug

(17) 5" Cast Iron Cement Retainers

(2) 4-1/2" Ball Drop Cast Iron Bridge Plugs

(24) **MAGNUM** Composite Bridge Plugs

(25) **BEAR CLAW** 4-1/2" Flow Ball Composite Plugs

(75) **BEAR CLAW** 4-1/2" Ball Drop Composite Plugs

Large Assortment of Setting Sleeves & Parts

(15) **WEATHERFORD** 13-3/8" to 5-1/2" Float Shoes & Collars • (46) 3-1/2" & 2-7/8" Float Shoes & Collars • Asst'd BAKER Float Shoe Changeover Subs

(2) **INDUSTRIAL RUBBER** 4-1/2" Type A Packer Shoes

INDUSTRIAL RUBBER 5-1/2" Type A Packer Shoe

5-1/2" Vent Packer Shoe • (10) 2-7/8" Cementing Baskets • (2) 4" OD Weld-On Float Shoe

Hundreds of 4" • 7" & 9-5/8" Casing Centralizers

MAGNUM Disk Subs: (7) 2-7/8" • (2) 2-3/8" • (4) 1.90" (**NEW**)

MISC PRODUCTION TOOLS

(5) 2-3/8" Ball Catchers • Asst'd Ball Drop Kits & Balls

DEPEC Bailers: (2) 2-7/8" & (2) 2-3/8"

5-1/2" x 4-3/4" PBR w/ Seal Assm

Approx (100) On-Off Tool Stingers: 4-1/2" to 2-3/8"

Approx (50) 2-3/8" & 2-7/8" Profile Nipples, Some SS (**NEW**)

2-7/8" Sand Screen • 2-7/8" & 2-3/8" x 10'L Blast Joints

Hundreds of Tubing Pup Joints: 3-1/2" to 2-3/8"

Approx (800) Casing Subs: 4-1/2" 13.50# P-110 w/ LTC 8RD Couplings

Asst'd Wellhead Strippers Rubbers (**NEW**)

(70) 7" Type GW Packer Cups (**NEW**)

(54) 2-1/2" Type M Swab Cups (**NEW**)

(2) Offshore Tool Baskets

SCRAPERS / SWIVELS / MANIFOLDS

BEST Casing Scrapers: (2) 9-5/8" • 7" & (2) 4-1/2" • **BOWEN** Casing Scrapers: 10-3/4" • 7-5/8" • (3) 7" • 4-1/2" • (2) 4" • 3-1/2" • 2-7/8" • 2-3/8"

(2) 2-7/8" **BULLDOG** Bailers w/Check Valves

(3) **KLINE** 2-7/8" Tubing Swivels • (2) 2-7/8" Tubing Swivels

(4) Frac Manifolds w/ 2" Fig 1502 Plug Valves

Plus: Shop Equipment, Pumping Unit Engines, Compressors, Asst'd Production Equipment & Analog Wireline Logging Equipment



NEW

Impression Blocks - DY2 YD2



NICE

2019 J.DEERE 333G - DY3 YD3



BOBCAT T-180 - DY3 YD3



300"WB

2004 MACK RD690SX - DY3 YD3



1-432-296-4465

11611 West County Rd 128 • Odessa, TX 79765

www.SuperiorAuctioneers.com

AUCTION INFORMATION

Date & Time: Tues-Thurs, December 7/8/9, 2021 @ 9:00AM (CST) Each Day
Auction Location & Crew Headquarters: Embassy Suites – Airport

1815 S Meridian • OKC, OK 73108 • (405) 682-6000 (Tel)

Other Hotels: Holiday Inn Express • 4501 SW 15th • (405) 609-6690

Fairfield Inn • 4521 SW 15th • (405) 604-3223 | Staybridge Suites • 4411 SW 15th • (405) 429-4400

Airport: Will Rogers World Airport (OKC), and AAR Aircraft Services FBO @ (405) 218-3160

Online Bidding: Provided by Proxibid.com. Please register to bid at this auction 48 Hours Prior to Sale Day

BIDDING TERMS

All Bidders must register and receive a bidder number. All purchases must be PAID IN FULL before equipment will be released. Acceptable forms of payment include Wire Transfer, Cashier's Check or Personal/Company Check Accompanied by BANK LETTER OF GUARANTEE. No cash, drafts, credit cards or ACH payments will be accepted. All printed information regarding this sale is merely a guide, subject to change, and neither the Auction Company, Sellers, nor Publishers shall be liable for any errors. ALL items are sold "AS IS, WHERE IS, WITH ALL FAULTS" without a warranty or guarantee of any kind, whether written, expressed or implied as to merchantability or fitness for a particular purpose. **A 5% Administrative Fee will be charged on all purchases (10% Total for Internet Purchases).**

SALES TAX

Sales Tax will be charged on all purchases, unless the Buyer provides proper exemption documents required by the local Government Tax Agency where assets are located. Buyer agrees to pay all applicable sales tax on all purchases, unless they meet requirements mentioned above. Buyer also agrees to pay any sales tax that may be assessed after initial payment has been received. International Buyers must pay the sales tax as shown on your invoice. Proper documentation must be provided in a timely manner to assist in obtaining any sales tax refund (**See Bill of Lading Requirements on our website**).

ABSENTEE BIDDING

You **MUST** be a customer in good standing to bid absentee. If we do not know you, a 50% wire transfer deposit will be required 24 hours prior to 9AM auction start.



'98 PETE 379 Gin / Vac - DY3 YD3



2012 MACK w/ KERR KA-3500 - DY3 YD3



2012 INT'L Bucket & '01 Digger - DY3 YD3



2018 F-350 - DY3 YD3

DAY 2

YARD #2 - OKLAHOMA CITY, OK

ADDRESS: Applied Oil Tool @ 1545 SE 29th, 73129

PREVIEW: December 1st, M-F (8-5)

CONTACT: Billy Guinn @ (405) 625 - 5569

NEW SURPLUS FISHING TOOLS

NEW Overshots: Including Series 150, Series 70, Series 20 & 10 Overshots, Top Subs, Extensions, Lip Guides, 5,000 Plus Basket & Spiral Grapples & Controls, 1-5/8" OD to 12-1/4" OD **(NOTE: Many Nitralloy)**

NEW Center Spears GR# 9268 Thru GR 9917 w/ (150) Spear Grapples & Asst'd Segmented Spear Grapples

Asst'd **NEW** Packer Picker Retrieving Tools

(13) **NEW GOTCO** Casing Scrapers & Blades

(4) Magnets 10-1/2" to 4" OD, Plus Numerous Elements, Guides & Magnet Parts

(16) **NEW** Rotary (Boot) Junk Baskets, 13-5/8"OD to 4-1/2"OD

(12) **NEW** Taper & (7) Box Taps

Asst'd **NEW** Lead Seal Casing Patches w/ Grapples & Seals & Includes Many High Pressure

Asst'd **NEW** Packer Type Casing Patches

Asst'd **NEW GOTCO** Globe Baskets w/ Thousands of Fingers & Parts

Asst'd **NEW GOTCO** Reverse Circulating Junk Baskets

(7) **NEW WP HYDRIL** Washpipe Canfield Bushings

(7) **NEW** Lead Impression Blocks, Dressed

(20) **NEW** Drill Collar Changeover Subs

Approx (75) 2-7/8" 7.9# P-110 Tubing Pup Joints w/ PH-6; 12'L to 2'L **(Tested 10,000#)**

(17) 2-7/8" & 2-3/8" Profile Nipples, PH-6

JARS/INTENSIFIERS/BUMPER SUBS

NEW GOTCO Type 'Z' Hydraulic Fishing Jars: 3-1/8"OD to 8"OD

NEW GOTCO Intensifiers/Amplifiers: 3-1/8"OD to 8"OD

(2) **GOTCO** BSK-500 5" OD Manual Bumper Subs w/72" Stroke & Fluid Seals **(Used Twice by EXXON MOBIL Offshore, Rare)**

NEW LOGAN Manual Bumper Subs; (2) 6-5/8"Reg • (3) 4-1/2"IF • (2) 2-3/8"Reg • (3) **GOTCO** 5-1/2"Reg & **NEW LOGAN** & **GOTCO** Bumper Sub Parts; 3-1/8" to 8"OD

(4) **NEW** Hydraulic Rod Jars

Approx (50) Asst'd Jar Testing Subs • Numerous HD Tool & Grapple Racks

DAY 3

YARD #3 - DRUMRIGHT, OK

ADDRESS: ME-3 Well Service @ 52583 West Hwy 33, 74030

PREVIEW: December 1st, M-F (8-5)

CONTACT: Oscar Wynn @ (918) 576-9118

CONSTRUCTION EQUIPMENT

KOMATSU PC160LC-8 Hydraulic Excavator, S/N-25815

J.DEERE 700K-XLT Crawler Tractor, S/N-IT0700KXPDE250983, w/ 3-Shank Ripper, EROPS

2010 CASE 850 Crawler Tractor w/ Dozer, ALLIED Winch, EROPS

HITACHI EX17U Hydraulic Excavator S/N- FFO1L30210533

2011 CASE 580 Super N Extenda Hoe Loader/Backhoe S/N -JGN58SNVBC542212, EROPS **(6,000 Hrs)**

2008 CASE 580 Super M Extenda Hoe Loader/Backhoe, S/N-N8C505271, EROPS **(4,026 Hrs)**

2019 J.DEERE 333G Track Skid Steer Loader, S/N- 1T0333GMLKF362656, w/ Brush Hog, Mulcher, Bucket, Forks & Blade **(NICE)**

2008 BOBCAT T-180 Track Skid Steer Loader w/ Tree Shear, Grapple, Forks & Bucket

'90 TAMPO RP-16D Self Propelled Sheepsfoot Roller Compactor, S/N-S60900006P

2002 DITCH WITCH 3700DD Trencher S/N 3S1103 w/ Backhoe & Auger Attach's

J.DEERE 670 Motor Grader S/N 005164T, 12' Moldboard, Enclosed Cab

2014 PETERBILT 567 T/A Dump Truck

2006 PETERBILT 379 T/A Dump Truck

'95 FORD LN9000 T/A Dump Truck

2010 SKY TRAK 6036 Telescoping Boom Forklift, S/N-36797

(2) **2004 SKY TRAK** 6036 Telescoping Boom Forklifts, S/N 7485 & 4712 (1-Needs Work)

2004 MQ POWER Whisperwatt D31001J2, 60KW Generator p/b J.DEERE 4045TF Eng, Enclosed

(3) **MAGNUM** 6KW Light Towers EA p/b ISUZU Diesel

2017 CEN-TEX 6 x 12 T/A Utility Trailer w/ WYLIE Chemical Sprayer & Tank

8' x 40' Shipping Container; Converted to Office, Insulated, Paneled w/ H & A, Electrical & Lights

8' x 8' x 20' Shipping Container • **2012 POWER HOUSE** 16' T/A Trash Trailer

TRUCKS & TRAILERS

2006 MACK CV-713 T/A Rig-Up Gin Truck, 327"WB w/ (3) Winches, 215,000 Miles

2004 MACK RD690SX T/A Rig-Up Gin Truck, 300"WB w/ (3) Winches, Telescoping Gin Pole

2015 KENWORTH W-900 6 x 4 T/A Winch Truck Tractor, w/ BRADEN AMS30-18B Hyd Winch

2009 PETERBILT 335 S/A Gin Truck w/ Hyd Winch, & MILLER Welder (Damaged Front End)

2008 FORD F-750 S/A Winch Truck (Blown Eng)

'98 PETERBILT 379 6 x 4 T/A Gin/Vac Truck, w/ (2) Winches, FRUITLAND Vac Pump



2015 KENWORTH W900 Winch - DY3 YD3



2010 WICHITA 500-Bbl - DY3 YD3



2019 F-350 Powerstroke - DY3 YD3



FRANKS 658 S/D - DY3 YD3



FRANKS 1287 - DY3 YD3



2015 PERFORMANCE Spooler - DY3 YD3



JWS-400 / 3408 - DY3 YD4



G-D PAH / CAT C-13 - DY3 YD4

'81 MACK RD600K Glider T/A Gin Truck

2013 ATOKA T/A Equipment Trailer w/ Ramps

2008 BELSHE BF9T T/A GN Equipment Trailer

'89 HERCULES 42' OAL 3-Axle Oilfield Lowboy

'98 AZTEC 45' T/A Oilfield Float

'92 TRANSCRAFT 45' T/A Flatbed Trailer

'82 LUFKIN T/A Narrow Neck Lowboy Oilfield Lowboy

VAC TRUCKS / TRAILERS / FRAC TANKS

2018 PETERBILT 389 T/A 70-Bbl Bobtail Vac Truck, Lined w/ FRUITLAND Vac Pump, Load Pump

2012 MACK GU-713 4X2 T/A Bobtail Kill Truck w/ 60-Bbl Tank, KERR KA-3500 Triplex

2008 MACK GU-813 4-Axle 70-Bbl Bobtail Kill Truck w/ G-D TEE Triplex, JUROP Vac Pump

'98 PETERBUILT 379 T/A 60-Bbl Bobtail Kill Truck w/ G-D TEE 10,000# Triplex (FE REBUILT)

2004 MACK CX-613 65-Bbl T/A Bobtail Vac Truck w/ WALLENSTEIN Vac Pump

'98 PETERBILT 385 T/A Vac Truck Tractor, w/ FRUITLAND Pump

2012 SOUTHERN 130-Bbl T/A Vac Trailer

2005 GALYEAN 130-BBL T/A Vac Trailer

2014 WICHITA 500-Bbl Flat Top Frac Tank

(7) 2010 WICHITA 500-Bbl Flat Top Frac Tanks, Lined w/ Manifolds

BUCKET & DIGGER TRUCKS

2019 DODGE Ram 5500 S/A Dually Bucket Truck

2012 INTERNATIONAL 7400 SBA 6x4 Workforce T/A Bucket Truck w/ ALTEC AM-55 Boom

2011 INTERNATIONAL 4300V S/A Bucket Truck w/ 'ETI' Boom

'98 FREIGHTLINER FL-80 S/A Bucket Truck w/ VANGUARD V50CH-551P-4TFS2 Boom

2001 INTERNATIONAL 4900 T/A Digger Truck w/ TEREX 4045 Commander Boom

2000 INTERNATIONAL 4900 T/A Digger Truck w/ TEREX 4045 Commander Boom

CREW TRUCKS & TRAILERS

(2) 2018 FORD F-450 4x4 Ext Cab Dually Flatbed Truck w/ Power Stroke Diesel, LINCOLN Welders

(2) 2015 FORD F-450 4x4 4-Dr Dually Crew Truck, w/ Power Stroke Diesel

2014 FORD F-450 4x4 4-Dr Dually Crew Truck, w/ Power Stroke Diesel

2018 FORD F-350 4x4 4-Dr Dually Flatbed Truck w/ Power Stroke Diesel, LINCOLN Welder

2019 FORD F-350 4x4 Dually Flatbed Truck, w/ Power Stroke Diesel

2019 FORD F-350 STX 4x4 Dually Flatbed Truck w/ Gas Eng

2018 FORD F-350 Ext Cab Dually Flatbed Truck w/ Gas Eng

2018 FORD F-350 4x4 4-Dr Dually Crew Truck, w/ Gas Eng

2015 FORD F-350 4x4 4-Dr Dually Truck w/ Gas Eng, AUTOCRANE

2015 FORD F-350 4x4 4-Dr Dually Flatbed Truck w/ Gas Eng

2014 FORD F-350 4x4 4-Dr Dually Crew Truck, w/ Gas Eng

2012 FORD F-350 4x2 4-Door Dually Flatbed Truck, (Engine Blown)

2018 FORD F-250 4x4 4-Dr Service Truck, w/ Gas Eng

2018 & 2015 FORD F-250 4x4 4-Dr Flat Bed Trucks, w/ Gas Eng

2014 FORD F-250 4x4 Service Truck, w/ Gas Eng

(2) 2012 FORD F-250 4x4 4-Dr Service Trucks w/ Gas Eng

2008 FORD F-250 4x4 Ext Cab Pickup, w/ Gas Eng

2011 FORD F-350 4x4 4-Dr Pickup, Gas Eng (Engine Blown)

2006 GMC 2500 4x4 Pickup, w/ Gas Eng (NEW MOTOR)

2014 FORD F-150 4x4 4-Door Pickup (Loaded) w/ Gas Eng

2012 CHEVY 1500 4x4 Ext Cab Pickup w/ Gas Eng

(5) FORD F-250 & F-350 Dually Truck Beds (UNUSED)

2015 & 2014 CARGO CRAFT T/A BH Crew Trailers

2008 BANENS T/A Crew Trailer

FORREST RIVER Catalina 20RD T/A BH Travel Trailer

2016 MAXEY 20' T/A GN Equip Trailer

2016 MAXEY 18' T/A BH Utility Trailer

2011 ELITE 35' T/A GN Trailer

2009 ELITE T/A GN Trailer w/ Dovetail Bed

2007 ELITE 40' T/A GN Equip Trailer

2008 30' T/A Dual Wheel GN Trailer

2016 MAXEY 20' S/A Utility Trailer (2) 2010 CM T/A BH Utility Trailers

2005 STARLITE S/A GN Trailer w/ Dovetail

2002 JACKSON 18' T/A BH Utility Trailer

WELL SERVICE RIGS

2008 FALCON SR-550 5-Axle D/D Well Service Unit w/ Disc Assist, p/b DETROIT S-60 14L, ALLISON M5610A DB, 104'H 275,000# Mast, McKISSICK 100-Ton Blocks

'72 FRANKS 1287 D/D Well Service Unit p/b CUMMINS N-14 Select, ALLISON 750, PEMCO 96' Mast, McKISSICK Blocks NEW Engine & Trans)

COOPER 4-Axle D/D Well Service Unit p/b DETROIT 8V-71, ALLISON TC-955 Torque, ALLISON TG-627, PEMCO 71' - 150,000# 4-Leg Mast, SOWA Blocks

FRANKS 658 S/D Well Service Rig w/ Telescoping Pole, Mtd on '91 FREIGHTLINER T/A Truck

'85 BIG T S/D Well Service Rig p/b DETROIT 6V-71, ALLISON CLT-750, Damaged Pole Mast, On 3-Axle Carrier

2-7/8" & 2-3/8" Tubing Swivels, BIW & JU Tubing Strippers & (NEW) Rubbers

BEST 4-1/2" • 5-1/2" & 7" Casing Scrapers

Tools for (4) Well Service Rigs; BJ RS Tongs, Air Slips, Tubing Elevators, Rod Tools, Weight Indicators, Oil Savers, Mouse Traps, Rod Overshots, Numerous Tricone Drill Bits, Tubing & Drill Collar Changeover Subs & Lift Subs



(1 of 3) WS Hyd Catwalks - DY3 YD4



G-D PAH / 8V-71 - DY3 YD4



LOGAN PS-85 - DY3 YD4



JWS-340 / CAT 3406 - DY3 YD4



JWS-340 / CAT 3406 - DY3 YD4



Accumulators - DY3 YD4



(1 of 2) 2008 KENWORTH T-800 - DY3 YD10



2011 MSI Dbl Pumper / QSX-15 - DY3 YD10

PUMPS/DRILLMOBILES/SWIVELS

2009 G.DENVER TEE Triplex p/b CUMMINS Diesel, w/ 100-Bbl Tank, on T/A Trailer

2010 Drillmobile w/ BOWEN S-2.5 Swivel p/b CAT C4.4, G-D TEE Triplex p/b CUMMINS & Tank, on 2010 VIKING T/A Trailer (NOTE: Fire Damaged)

2009 BOWEN S-2.5 Power Swivel p/b CAT C4.4 Eng, Skidded 4'H 200-Bbl Mud Tank, Skidded • 3'H 135-Bbl Mud Tank, Skidded • (2) 75-Bbl Mud Tanks

SPOOLER & PIPE TRAILERS

2015 PERFORMANCE T/A GN REDA Cable Spooler Trailer, w/ HPU p/b CAT C2.2 Eng

QUEST T/A GN Pipe Trailer • 2018 FREISEN T/A BH Pipe Trailer • (3) 2014 FREISEN T/A BH Pipe Trailers • (3) T/A BH Pipe Trailers

WATER FLOOD SYSTEM

KERR KM-3250 Triplex w/ Instrumentation, Mtd in 2010 TURNBOW T/A GN Aluminum Enclosed Trailer

DRILLING RIG

S/D Drwks w/ 15" Brake, Catheads, p/b CAT 3406, ALLISON CLT-5860, on T/A Trailer w/ Substructure

Shopbuilt 97'H Cantilever Mast, Catwalk Trailer • NIPON 25.9KW AC Gen p/b ISUZU B-4BG1 Diesel

G.DENVER FXN Duplex Pump p/b CAT 3406 • Doghouse on T/A Trailer • Fuel Tank • 500-Bbl Crimped Steel Water Tank • Mud House w/ MISSION 5" x 6" Pump • REGAN TORUS 9"-3,000# Annular BOP •

BARTON Choke Manifold • VALVCON 3-Sta Closing Unit w/ (4) Bottles, (2) Air Pumps • (2) KING 15MB Swivels • 5-1/4" Hex Kelly • IDECO UTB-160 4-Sh Block/Hook Combo • 17-1/2" Rotary Table • Wireline Unit p/b Gas Engine • (12) 6-1/4"OD Drill Collars, XH • Junk Box w/ Handling Tools • Pipe Tub w/ 4-1/2" Drill Pipe • (2) 42"H Pipe Racks

Rig Moving Trailers: **2007 LUFKIN FL-11 T/A Trailer • (2) 2006 TRANSCRAFT TL-2000 45' x 102" Tandem Spread Axle Trailers**

PRODUCTION EQUIPMENT

(To Be Offered Dec 7th - Day 1)

AMERICAN 456-304-144 Pumping Unit S/N-T30F144-30S

CMI 320-305-120 Pumping Unit p/b Elec Motor

ARROW C-66 Pumping Unit Engine

NATIONAL J-165 Triplex p/b 150HP Elec Motor

(2) **NATIONAL J-100 Triplexes w/ NOV Gear Reducers, EA p/b 125HP Elec Motor**

YARD #4 - OKLAHOMA CITY, OK

ADDRESS: Flint Equipment @ 4101 S High Ave, 73129

PREVIEW: December 1st, M-F (8-5)

CONTACT: Mike Johnson @ (405) 620-3992

RIG/PUMPS/SWIVELS

(3) 42"H Well Servicing Hyd Catwalks w/ HPU p/b KUBOTA Diesel's

2013 KERR T-60, 600HP Triplex w/ 2018 10,000# SS FE p/b CAT C-18, ALLISON 4750-OFS (3,089 Hours)

SPM TWS-600 Triplex w/ 10,000# FE p/b CAT C-18, ALLISON 4750-OFS (LOW HOURS)

NOV JWS-400 Triplex p/b CAT 3408

NOV JWS-400 Triplex p/b DETROIT Series 60

GARDNER DENVER PAH Triplex w/ 10,000# FE p/b CAT C-13

GARDNER DENVER PAH Triplex p/b DETROIT Series 60

GARDNER DENVER PAH Triplex p/b DETROIT 8V-71

(2) **NOV JWS-340 Triplexes EA p/b CAT 3406**

GARDNER DENVER FXX Duplex p/b CUMMINS 6BT, 5-Spd Trans

2006 LOGAN PS-85 Power Swivel p/b PERKINS 4-Cyl, on T/A GN Trailer

LOGAN PS-85 Power Swivel p/b DET 4-71, on T/A GN Trailer

(2) **BOWEN S-2.5 Power Swivels p/b DET 4-71's, (2) on T/A GN Trailers, (1) Skidded**

BOWEN S-45 Power Swivel p/b DET 3-53, on T/A BH Trailer

WELL CONTROL

INTEGRATED 7-1/16" 5,000# Dbl Hyd BOP

(2) 4-Station Accumulators w/ (4) Bottles, Triplex Pump p/b HATZ Diesel, EA on T/A GN Trailers

(4) 3-Station Accumulators w/ (4) Bottles, Triplex Pump p/b HATZ Diesel, EA on T/A GN Trailers

2-Station Accumulator w/ (2) Bottles, Triplex Pump p/b HONDA Gas, Skidded

(5) 7-1/16"-5K & (2) 10K Frac Valves

WASHPIPE / DRILL COLLARS

630' (21 jts) 3-3/4" OD WP Hyd Washpipe

180' (6 jts) 3-1/8" OD WP Hyd Washpipe

(10) 4-3/4" OD Drill Collars w/ 2-7/8"IF

(11) 3-1/8" OD Drill Collars w/ 2-3/8" PAC

(3) T/A BH Pipe Trailers • Tandem Axle Monorail Trailer • 4-1/2" OD Portable Flare Stack, on T/A Trailer

YARD #5 - OKLAHOMA CITY, OK

ADDRESS: Superior/HEI @ 4901 S Rockwell, 73179

PREVIEW: December 1st, M-F (8-5)

CONTACT: Todd Sorrels @ (405) 397-9914

SERVICE RIG/PUMPS/TOOLS

KREMCO K-600 D/D 5-Axle Well Service Unit, p/b DET 8V-92T, 98'H 217,000# Mast

G.DENVER PAH Triplex p/b CAT 3408, ALLISON CLT-5860, Remote, 5" x 6" Charge Pump, Manifold

G.DENVER PAH Triplex p/b DET 8V-92T, ALLISON CLBT-750, Remote, 5" x 6" Charge Pump, Manifold

G.DENVER TEE Triplex p/b DET 6-71, FULLER Manual Trans, Skidded

McKISSICK 83 100-Ton 3-Sh Tubing Blocks • McKISSICK 73 50-Ton 3-Sh Tubing Blocks • KING 1-3/4" x 60" Elevator Links (MPI'D) • MYT Slip Type Tubing Elevators, 2-3/8" (NEW) • 310' (10 Jts) 4"OD Washpipe w/ FJWP



130-Bbl Vacuum Trailers - DY3 YD6



FORD Pickups - DY3 YD9



(4) Hyd Power Packs - DY3 YD5



9920' of 4-1/2" S 16.60# - DY3 YD5



G-D PZ-10 / (2) GE 752's - DY3 YD7

651' (21Jts) 1" 2.54# R-2 Tubing w/ CS Hyd

DETACH TRAILER/WINCH

2007 HOLDEN 53'OAL 5-Axle Detachable Neck Lowboy

TULSA 80 Hyd Winch w/ NEW Line & HR Rack

POWER PACKS/DRILLING EQUIP

(2) Hyd Power Packs EA w/ Dual Pumps p/b DETROIT 6V-92T's

(2) Hyd Power Packs EA w/ 3-Pumps p/b DETROIT 6V-92T's

9,920' (320 Jts) 4-1/2" S-135 16.60# Range 2 Drill Pipe w/ 4-1/2" NC-46 BN TJs's, 6-1/16"- 6-1/8" OD (DWB)

CHINESE 1300HP Triplex p/b CAT 3512

YARD #6 - PERRY, OK

ADDRESS: Southern Plains W/S @ 13200 John Wayne, 73077

PREVIEW: December 1st, M-F (8-5)

CONTACT: Rory Jet @ (580) 336-7444 or (918) 521-9292

TRUCKS/VAC TRAILERS

(2) 2015 PETE 389 T/A Vac Truck Tractors w/ FRUITLAND Vac Pump (Eng's Blown)

(2) 2014 NAVISTAR Prostar + 122 6X4 T/A Vac Truck Tractors w/ Vac Pumps (1- Has Front End Damage)

2001 MACK CH-613 T/A Vac Truck Tractor w/ NATIONAL NVI-360CW Pump

2016 TANKKO 130-Bbl T/A Vac Trailer

(2) 2014 GR 130-Bbl T/A Vac Trailers



Set of (3) 800KW 600V Gens - DY3 YD8

(2) 2007 DRAGON 130-Bbl T/A Vac Trailers

2006 GAYLEAN 130-Bbl T/A Vac Trailer

2014 FORD F-150 XL Ext Cab 4x4 Pickup

2009 FORD Expedition 4x4 SUV

WELL SERVICE EQUIPMENT

Portable Insert Pump Repair Shop w/ GEARENCH Vises, BAIRD Ball & Seat Tester, Complete, Mtd in '92 STEDWELL 28' T/A BH Alum Enclosed Trailer

(3) 5'H 100-Bbl Mud Tanks • (12) Liner Dress-Off Tools; 4-1/2" & 5-1/2" • (8) Asst'd Drill Pipe Pup Joints

TOWNSEND 9"-3000# Dbl Hyd. BOP • (3) SHAFFER 'LXT' 7-1/16"-3,000# Dbl. Hyd. BOP's • (47) Sets of SHAFFER 'LXT' 7-1/16" BOP Rams • (4) 3-Station Accumulators w/ (4) 10-Gal Bottles • (4) 7-1/16"-5,000# Flanged Drilling Spools EA w/ (4) WKM 3-1/8" G. Valves

YARD #9 - CANONSBURG, PA

ADDRESS: Oil States Energy @ 255 S Johnson Rd, 15317

PREVIEW: November 30th M-F (8-4) BY APPOINTMENT ONLY

CONTACT: Michael Segers @ (724) 579-8848

TRUCKS/TRAILERS

2012 INTL 4400 S/A Truck Tractor w/ Sleeper p/b MAXXFORCE 9.3L

(4) 2015 - 2012 FORD F-250 4x4 Crew Cab Pickup Trucks p/b Diesel & Gas Eng's



KATO 1204KW / CAT 3512B - DY3 YD12

(7) 2012 - 2011 FORD F-150 4x4 Crew & Club Cab Pickup Trucks p/b Gas Eng's

(3) 2009 - 2007 TOWMASTER T/A 33' Utility Trailers

(4) 2009 - 2008 PJ T/A Utility Trailers w/ TPV & JET Sand Separators

2007 AMERICAN T/A Utility Trailer w/ WACKER NEUSON E1100 Diesel Fire Heater

(10) 2011 WACKER NEUSON E1100 Portable Diesel Fired Heaters

YARD #8 - WOODWARD, OK

ADDRESS: Power Rig @199584 East County Rd, 73802

PREVIEW: December 1st, M-F (8-5)

CONTACT: Jordan Davis @ (580) 216-3345

DRILLING EQUIPMENT

(3) WARD LEONARD 800KW 600V AC Generators p/b CUMMINS QSK23-67NR2 1220HP Eng's (Low Hours) EA Mtd on Top Covered Skid

MASTCO 3-Tank 1000-Bbl Mud System, 7'H w/ Pump Room Ext Cent Pumps, Agitators, (1) w/ Tandem Shale Shaker, Built-In Stairs, Lights, Telescoping Roof

2017 DERRICK Mud Cleaner w/ (3) Shale Shakers, Desilter, Desander, Telescoping Roof, Skidded

10'6"D x 32'L 500-Bbl Water Tank w/ Pump Room, (2) 2" x 3" Cent Pumps

8'H x 10' x 35' 400-Bbl Water Tank w/ 7' Porch, Skidded

WILLIAMS DAVIS Boiler, In 10' x 34' House, Skidded



\$300K Refurb in 2004

CARDWELL K-200C - DY3 YD13

34"H x 8' x 50' Pipe Tub (Sq Tubing)

11'4"W x 17'L Choke House, Skidded

SENTRY 350-Ton Block/Hook Combo

OILWORKS Hyd/Elec Wireline Measuring Unit • (14) SOUTHWEST F-1000 QC Fluid End Caps • (9) Asst'd Drill Collar Slips

YARD #7 - OKLAHOMA CITY, OK

ADDRESS: Five Star Rig & Supply @ 8009 S I-35 Service Rd, 73149

PREVIEW: December 1st, M-F (8-5) BY APPOINTMENT ONLY

CONTACT: Brandon Kutz @ (405) 761-0896

MUD PUMPS/RIG PARTS

GARDNER-DENVER PZ-11 1600HP Triplex p/b (2) G-E 752 Traction Motors (w/ Inspection Reports)

GARDNER DENVER PZ-10 1300HP Triplex p/b (2) G-E 752 Traction Motors (w/ Inspection Reports)

PARMAC 342 & (2) V-80 Brakes (UNUSED)

QUINCY 3470, 370 & 325 Air Compressors

G-D ADL-1003 Air Compressor

(7) WILDEN 2" & 3" Diaphragm Pumps

Asst'd Triplex Pump Parts • Roller Chain • Weld Fittings • SS Flex Hoses • Pump Drive Pedestal • Exhaust Expansion Joints • I-R Air Starters • (3) BOSTON HOIST 10"D x 6'L Hyd. Hoists (UNUSED) • Vibrator Motors • Rig Tarps (UNUSED)



(2) FORUM 3550 Hyd Catwalks - DY3 YD12



2013 INT'L 7400 Bucket Truck - DY3 YD3



2019 DODGE 5500 Bucket Truck - DY3 YD3



LOADCRAFT 1000E Rig - DY3 YD11

SCR Rig



2008 MACK w/ G-D TEE - DY3 YD3



2014 PETE 567 - DY3 YD3



2012 INT'L 7400 Bucket - DY3 YD3



2015 F-350 w/ STAHL Crane - DY3 YD3



(2) G-D PAH's - DY3 YD5

NICE



8263 S Harvard Ave, #FF
Tulsa, OK 74137

PRESORTED
FIRST CLASS MAIL
US POSTAGE
PAID
PERMIT NO 244
SAN ANTONIO TX



3 DAYS • DECEMBER 7/8/9, 2021 • OKC, OK • 9:00AM (CST) EA DAY

APACHE MS-5-625 Boiler, in House
CARGO CRAFT 20' T/A BH
Enclosed Trailer

YARD #10 - CENTER, TX

ADDRESS: 710 Louisiana St,
75935

PREVIEW: November 30th M-F
(8-5) BY APPOINTMENT ONLY

CONTACT: Duane Lout @ (936)
591-1288

TRUCKS/TRAILERS

(2) 2008 KENWORTH T800 T/A
Truck Tractors, EA w/ Sleeper p/b
CAT C-15 Eng

2008 FREIGHTLINER FLD T/A
Truck Tractor p/b DETROIT Diesel

2011 MSI Dbl-Pumper w/ 5K Cast
Fluid Ends, w/ (2) CUMMINS QSX-
15 Engs

'80 TOTAL EQUIPMENT Dbl-
Pump Trailer w/ (2) CUMMINS
V-12 Engs

2011 DRAGON Chemical Mixing
Trailer w/ (2) COBRA Cent Pumps
EA p/b J.DEERE 2.4L Engs

'69 JRUS T/A Nitrogen Transport Trlr

'82 ATOKA 36'L T/A Flatbed Trailer

(4) PACE 20'L T/A BP Cargo Trailers
8' x 20' S/A Doghouse Trailer

YARD #11 - HUMBLE, TX

ADDRESS: Henderson Rig Service
@ 6750 Bender Rd, 77396

PREVIEW: December 1st, M-F (8-5)

CONTACT: Jerry Matus @ (713)
823-0802

13,000' PORTABLE DRILLING RIG

2011 LOADCRAFT 1000E S/D
SCR Trailer Mounted Drilling Unit w
/WICHITA Disc Brake p/b (2) GE
761's, DSI 118'H 425,000# SHL
Mast, on 3-Axle Trailer

DSI 17'H Telescoping Sub, w/ 27-
1/2" Rotary Table & Drillers House

IEC SCR 1-Drive 3-Generator 4-
Bay SCR Unit

GENERATORS/COMPONENTS

(4) CAT 1050KW AC Gens p/b CAT
3512A's

Chinese JC-50 Drwvks

G.DENVER Triplex Pump Gearend

AMERICAN BLOCK 250-Ton
Blk/Hk Combo

Toolpushers House

Rig Change & Parts Houses

Water & Fuel Tanks

TOWNSEND 11" - 5000# Annular &
Double Ram BOP

(6) KOOMEY Type Accumulators:
10-Sta, 7-Sta, (2) 6-Sta, 5-Sta & 4-Sta

YARD #12 - BARNESVILLE, OH

ADDRESS: H&P Drilling @ 63448
Bahmer Rd, 43713

PREVIEW: December 1st, M-F
(8-5) BY APPOINTMENT ONLY

CONTACT: Cory Bates @ (740)
630-4414

GENERATOR/CATWALK

KATO 1204KW Gen p/b CAT
3512B Eng

(2) FORUM 3550 Hyd Catwalk w/
Walking System

YARD #13 - CANADIAN, TX

ADDRESS: King Well Service @
10925 Hwy 60, 79014

PREVIEW: December 1st, M-F (8-5)

CONTACT: Terrell Hardin @ (806)
255-0585

WELL SERVICE RIG

CARDWELL K-200C 5-Axle Well
Service Unit, p/b DETROIT S-60,
ALLISON 5860, CARDWELL 96'H -
180,000# Mast, on CARDWELL
5-Axle Carrier (\$300,000 Reman in
2004 by CROWN ENERGY,
Limited Use Since)